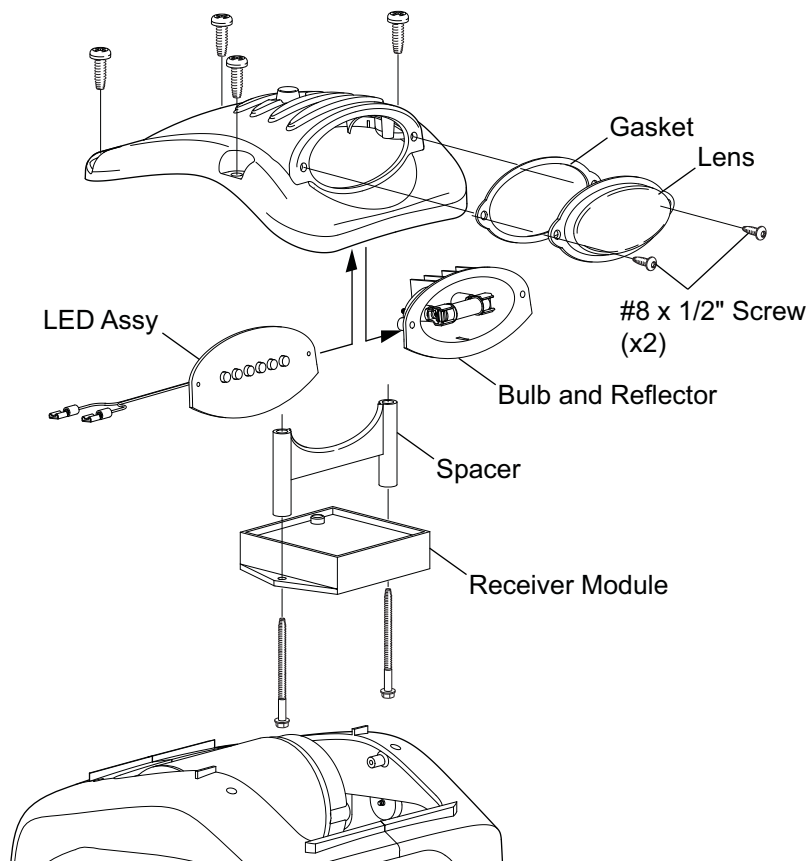


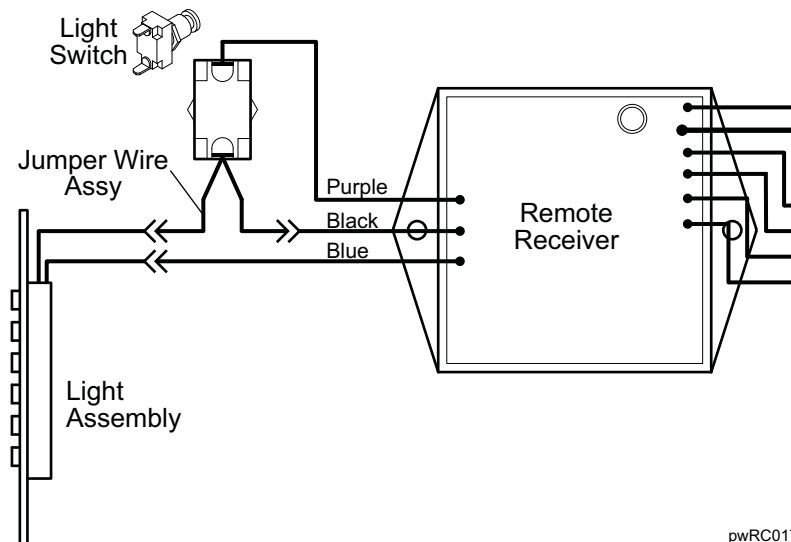
⚠ WARNING ALWAYS DISCONNECT THE BATTERY AND POWER SOURCES BEFORE WORKING WITH ELECTRICAL COMPONENTS.

This kit is for direct replacement of the LED panel used in the RC23 and RC30 Light. This kit can also be used to upgrade older units with the reflector and bulb style of light.

1. Disconnect power to the winch.
2. Remove the four (4) screws holding the top portion of the winch. Lift the top off carefully to avoid damaging the wiring.
3. Remove the two (2) screws holding the receiver module and carefully pull the module and spacer out of the top.
4. Remove the screws holding the lens, gasket and light assembly.
5. Disconnect the wires from the light assembly and set the old light assembly aside.
6. Place the new LED assembly on the inside of the top. Note the orientation shown in the diagram.
7. Secure the LED assembly, gasket and lens with two (2) #8 x 1/2" self-threading screws.
8. Attach the receiver module and spacer to the housing top.
9. Attach the LED wires to the switch and remote receiver as shown.



- NOTE:** For older units that had the reflector, the ring terminals from the Black and Blue receiver wires will slide in to the spade terminals on the LED light and jumper wire.
10. Attach the cover top to the winch using the screws removed previously.



pwRC017